



Apt 705 Christabel Tower, Dalton Street, Manchester, M40 7EH

EWS1 FORM AVAILABLE Investment Opportunity!

Jordan Fishwick are pleased to offer for sale this SEVENTH floor one bedroom apartment located a short distance from the city centre. The development has recently been refurbished by Urban Splash and offers modern living at a fraction of the city centre price. The apartment briefly comprises of: entrance hall with plenty of fitted storage cupboards, large corner living room with floor to ceiling windows, fitted kitchen with oven, hob and fridge. Good sized double bedroom, attractive bathroom suite with shower. Secure parking. B1 Rated EWS1 in place.. First time buyers or *Investors only - Rented at £900 until August 2024 offering a 8.3% yield* NO ONWARD CHAIN.

Price £125,000

Viewing arrangements

Viewing strictly by appointment through the agent

245 Deansgate, Manchester, M3 4EN 0161 833 9499 opt 3

Entrance Hall

Storage cupboards. Intercom system. Access to all rooms.

Living Room/Kitchen

23'6" x 13'5"

Range of wall and base units with worktops over. Sink with mixer tap. Cooker with hob and extractor over. Fitted fridge and freezer. Laminate flooring. Ceiling light. Wall mounted heater. Dual aspect windows.

Bedroom

13'2" x 9'8"

Fitted carpet. Ceiling light. Wall mounted heater.

Bathroom

Low level w/c. Sink with mixer tap. Bath with mixer shower over. Heated towel rail.

Externally

Secure allocated parking. Lifts to all floors. Bike storage.

Additional Information

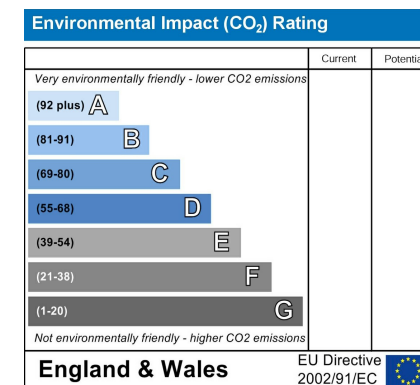
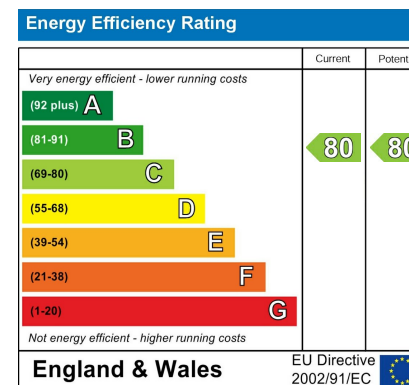
Council Tax Band A

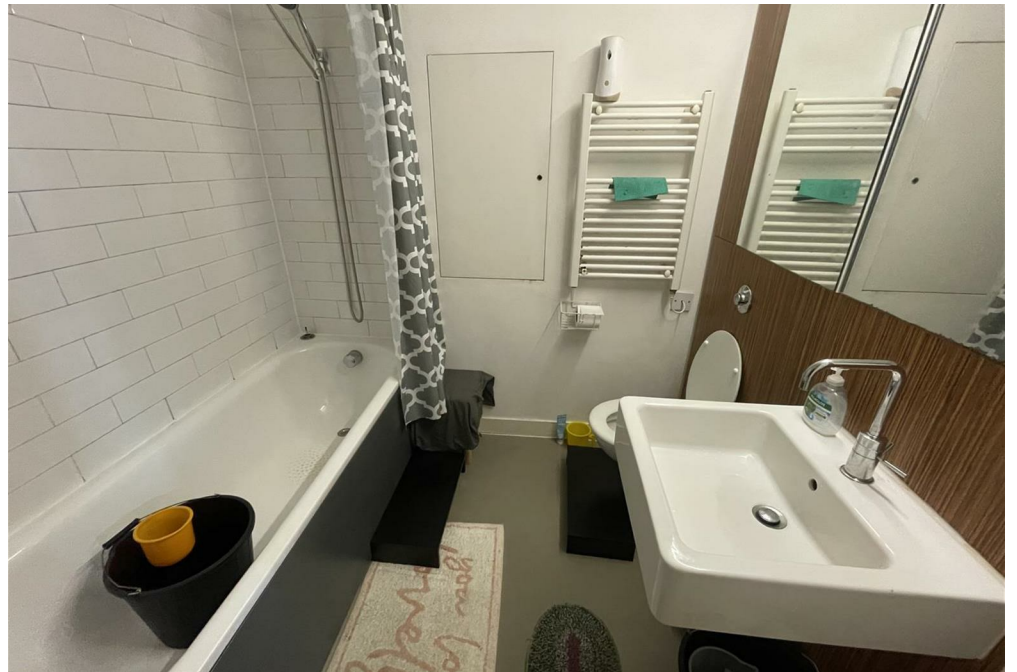
Service charges - £190 per month

Ground rent - £200 per annum

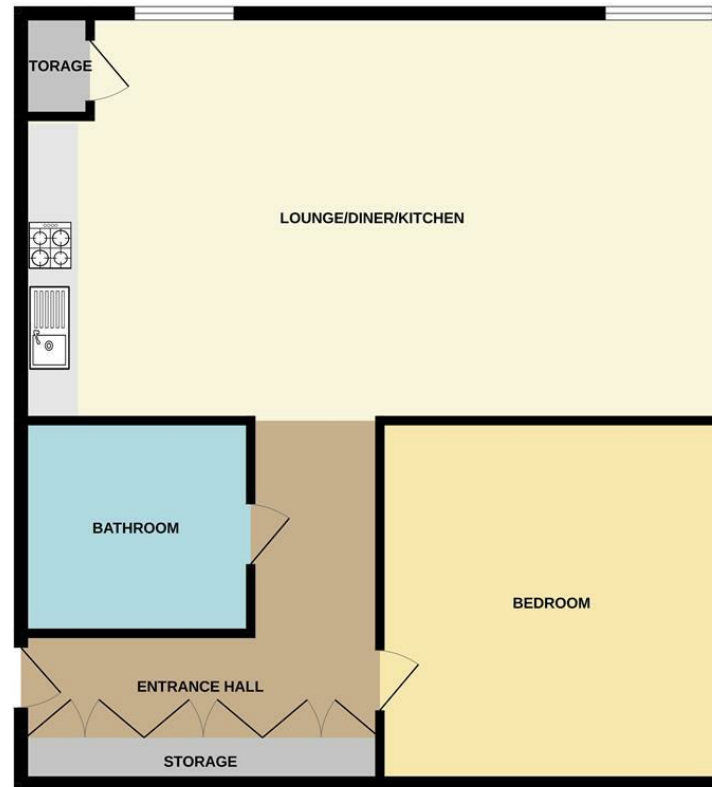
Lease - 250 years from 4 February 2005

Management company - RMG





7TH FLOOR



Measurements are approximate. Not to scale. Illustrative purposes only.
Made with Metropix ©2023



These particulars are believed to be accurate but they are not guaranteed and do not form a contract. Neither Jordan Fishwick nor the vendor or lessor accept any responsibility in respect of these particulars, which are not intended to be statements or representations of fact and any intending purchaser or lessee must satisfy himself by inspection or otherwise as to the correctness of each of the statements contained in these particulars. Any floorplans on this brochure are for illustrative purposes only and are not necessarily to scale.

Offices at: Chorlton, Didsbury, Disley, Hale, Glossop, Macclesfield, Manchester Deansgate, Manchester Whitworth Street, New Mills, Sale, Wilmslow and Withington

245 Deansgate, Manchester, M3 4EN

0161 833 9499 opt 3

manchester@jordanfishwick.co.uk

www.jordanfishwick.co.uk

